

Zion Lutheran Church Building Committee

After several months of meetings, researching facts, ideas and code requirements the Building Committee is pleased to offer three options for church building expansion. Please consider these options, feel free to ask questions and offer ideas. We will for discussion only visit together at next week's voters meeting these options.

Thank You

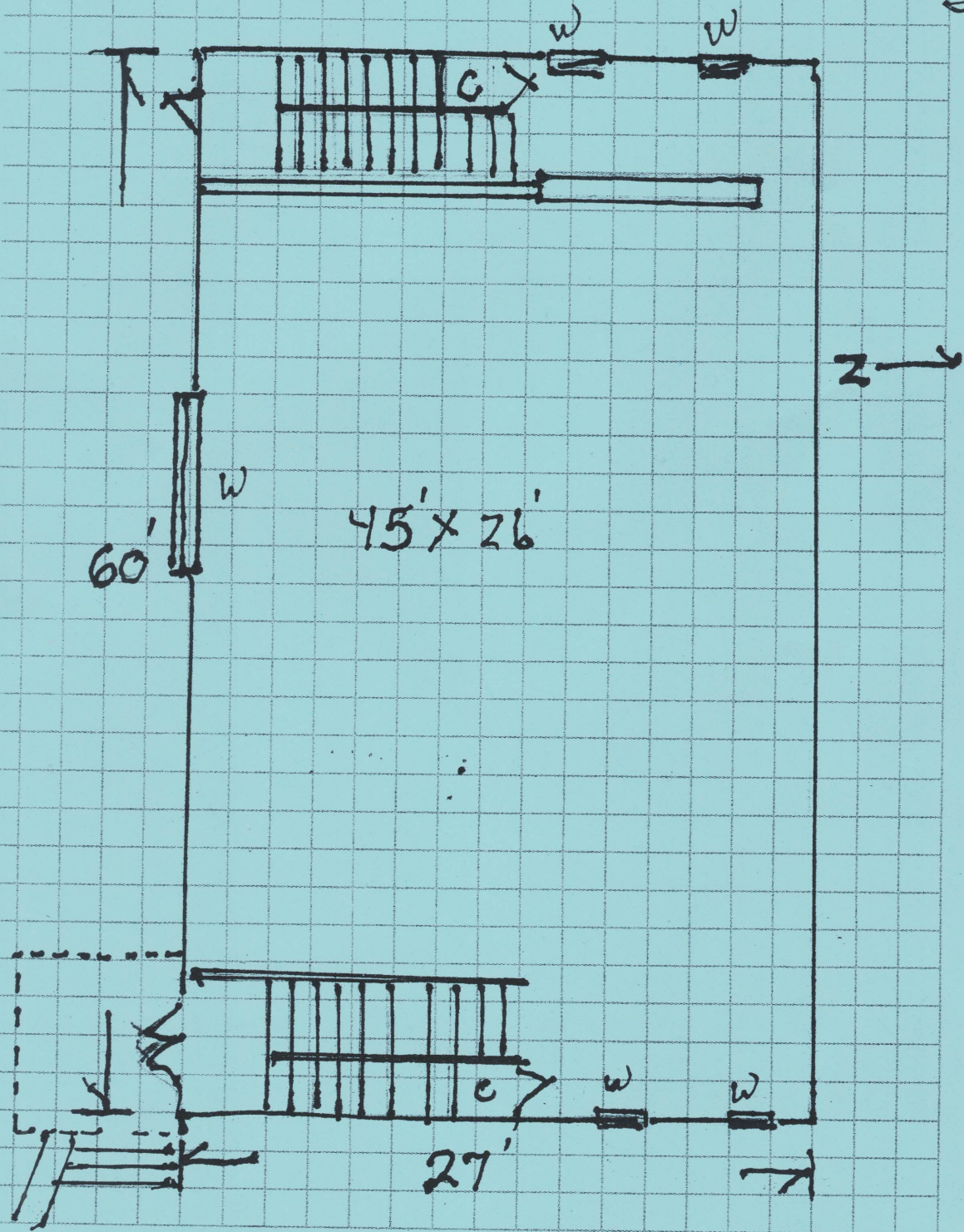
- Option 1. To build a new building containing a sanctuary, narthex, Pastors office, class rooms, bathrooms, kitchen and fellowship hall.

- Option 2. To remodel existing building adding new entrance and ramp to access both floors

- Option 3. A new smaller building than version option 1. Not attached to the existing building for future options.

In this packet please find Figure A. This is a drawing of our existing building. Also included is a drawing of the our lot and size, Figure B

Fig. A EXISTING Building

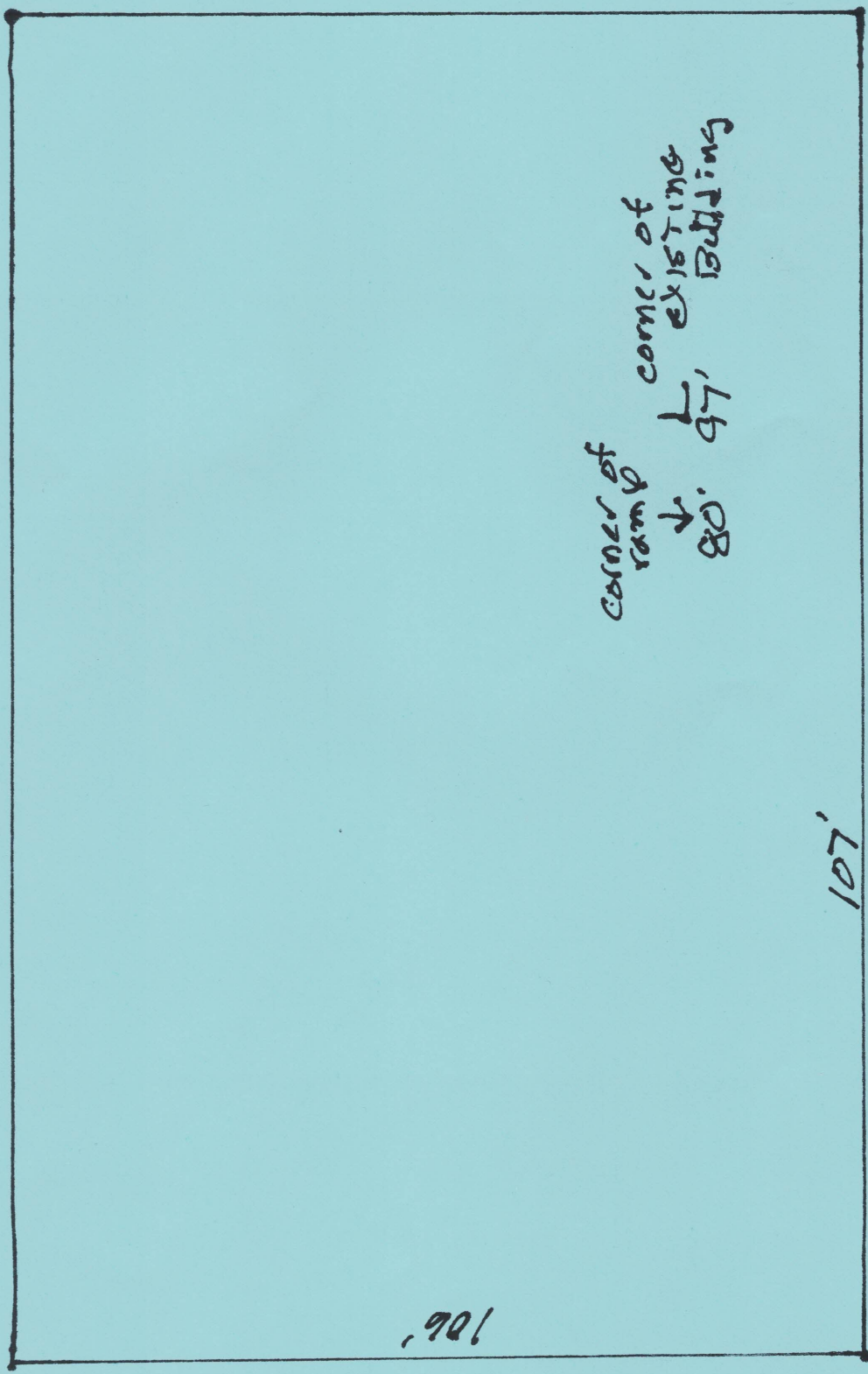


13-782 500 SHEETS, FILLER, 5 SQUARE
42-381 50 SHEETS, EYE CASE, 5 SQUARE
42-382 100 SHEETS, EYE CASE, 5 SQUARE
42-383 200 SHEETS, EYE CASE, 5 SQUARE
42-384 100 SHEETS, EYE CASE, 5 SQUARE
42-385 100 RECYCLED WHITE, 5 SQUARE
42-386 200 RECYCLED WHITE, 5 SQUARE



Made in U.S.A.

Lot size Fig. B



First Street W.

106'

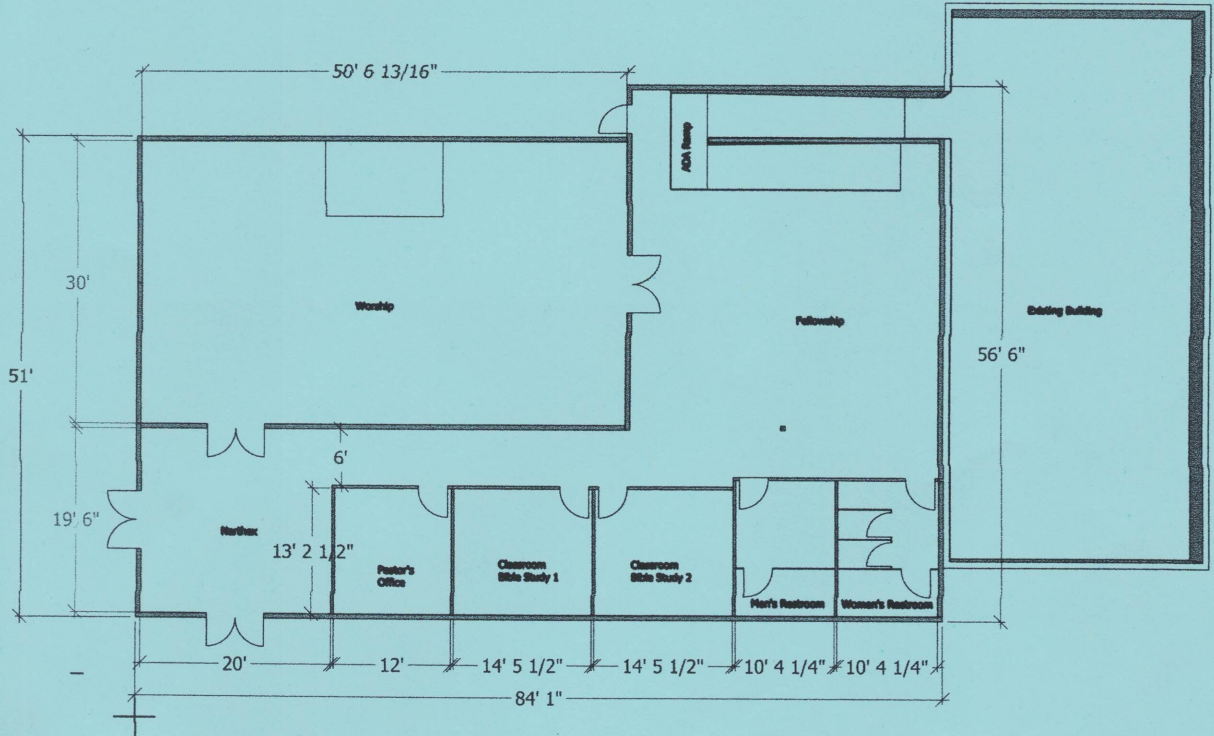
107'

Brooke Street N.

corner of ramp
corner of existing Building
↓
80' 47' 97' Building

Alby

OPTION 1 \$ 1.4 million



4,704 sq ft.

Option 3 \$ 600K

